

72cells Monocrystalline Double-glass Solar Panel

DDG330~345 (White/Transparent)



Outstanding module performance

- Anti PID
- High hot-spot resistance
- Double semi-tempered glasses strengthen cracking resistance
- Improve heat dissipation



Ensure fire safety performance

- Replace polymer back plate with tempered glass, to improve fire safety performance
- Passed fire safety test grade A



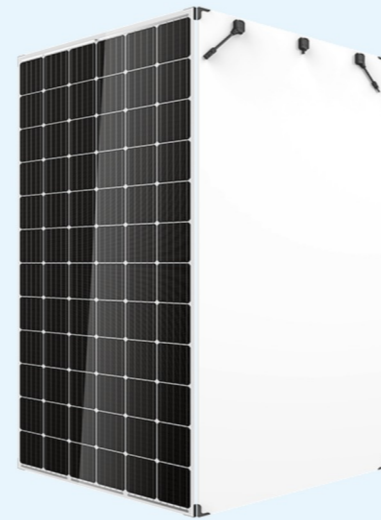
System cost reduction makes more efficiency

- Maximum system voltage enhanced to 1500V
- Compared with 1000V system, system overall cost reduced greatly
- 30-year linear power warranty, only 0.5% annual linear degradation

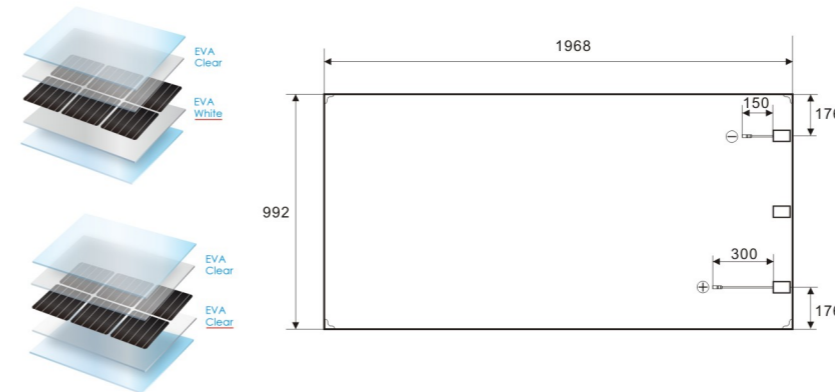


Harsh environment adaptation

- High transmittance, anti reflection, self-cleaning coated glass
- No aluminum alloy frame, no grounding
- Excellent performance on wind & sand resistance, salt mist resistance, ammonia corrosion resistance
- Passed positive snow loads (5400pa) and wind loads (2400pa) certification tests



Module dimension (mm)



Mechanical Performance Parameters

Cell dimension (mm)	156.75*156.75Mono
Module dimension (L*W*H) (mm)	1968*992*6(junction box thickness16)
Module weight (kg)	28
Cable section (mm ²)	4
Cable length(mm)	Negative150, Positive 300
Cell Nos & array	72 (6*12)
Diode Nos	3

Electrical Performance Parameters

Model	DDG-330	DDG-335	DDG-340	DDG-345
Maximum power at STC (Pm/Wp)	330	335	340	345
Maximum power voltage (Vmp/V)	38.0	38.2	38.37	38.55
Maximum power current (Imp/A)	8.68	8.77	8.86	8.95
Open circuit voltage (Voc/V)	46.3	46.5	46.8	47
Short circuit current (Isc/A)	9.4	9.49	9.58	9.67
Module efficiency (%)	16.9	17.2	17.4	17.67
Normal operating cell temperature (NOCT)	44.2 ± 2°C			
Temperature coefficient of Voc	-0.29%/°C			
Temperature coefficient of Isc	0.05%/°C			
Temperature coefficient of Pm	-0.39%/°C			
Power tolerance (W)	0~+5			

*STC (AM1.5, 1000W/m², cell temperature 25°C)

Packing Information

Module dimension	Container (20GP)
pieces/pallet	30
pallets/stack	2
stacks/container	4
pieces/container	240
1968*992*6	Container (40HQ)
pieces/pallet	30
pallets/stack	2
stacks/container	11
pieces/container	660

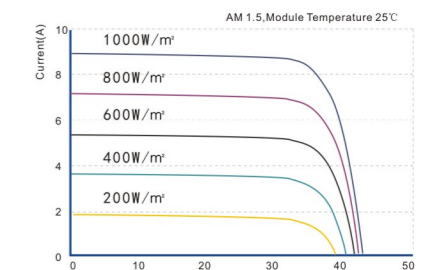
Quality Parameters

Maximum system voltage (V Dc)	1500
Module working temperature range (°C)	-40~+85
System maximum protection current (A)	15
Maximum wind loads/maximum snow loads (Pa)	2400/5400
Hot-spot resistance	100%hot-spot free

Quality Warranty

- 10-year materials & workmanship warranty
- 30-year linear power warranty
- 30-year 0.5% annual linear power degradation

I-V curve(330W)



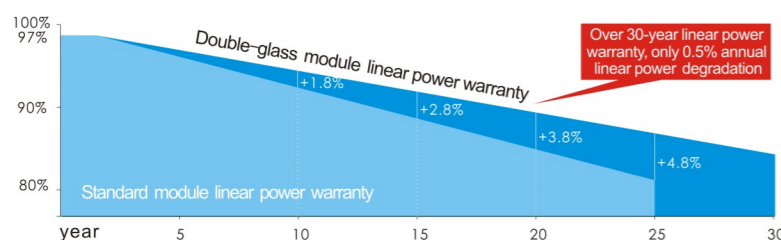
Attention:
Read safety and installation instructions before using.
The parameters in this sheet are subject to change without prior notice.

72cells
Mono module

330~345W
Output power

0~+5W
Power tolerance

Monocrystalline silicon double-glass solar panel linear power warranty



TUV



CE



CCC



ISO



CQC



Recyclable